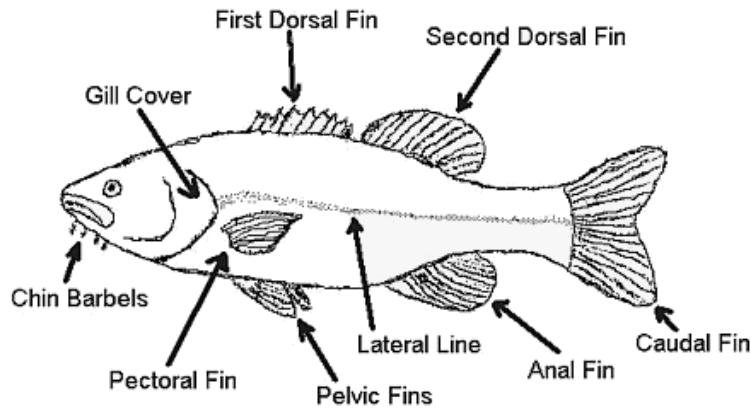




Prepared for NHF&G, WEP & LGF



New Hampshire Fish Identification (Confusing Species)



Generalized Fish Characters

Sucker Family: Catostomidae - Mouth directed downward, adapted for sucking, with thick fleshy lips; dorsal fin with 10 or more rays, never with a stout spine in front.

Common White Sucker, *Catostomus commersoni*



Description: A cylindrical fish with a blunt snout and a downward pointed fleshy mouth adapted for bottom feeding. The scales are relatively large and visible. Adults are black to brass colored on the back with a cream colored underbelly. Juvenile white suckers are more mottled in coloration. Breeding males can develop red or orange coloration along the body. Common white suckers can reach much larger sizes than longnose suckers.

Longnose sucker, *Catostomus catostomus*



Description: Longnose suckers are similar in appearance to white suckers except for a protruding snout that extends past the upper lip. The lower lip on the longnose sucker is larger than that of the white sucker and its scales are smaller.