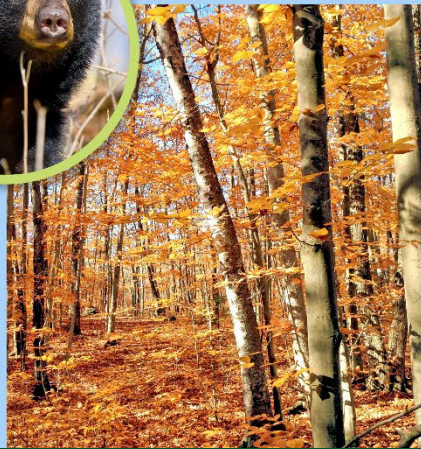




NEW HAMPSHIRE FISH AND GAME DEPARTMENT

WILDLIFE HABITAT PROGRAM

Your Wildlife Lives Here!



Acceptance of a Cash Donation from the Parsons Family Trust

NHFG Commission Meeting – September 19, 2023

September 19, 2023
NH Fish and Game Commission

ACTION ITEM (REQUESTED ACTION)

The Wildlife Division requests approval to accept a generous donation of \$150,000 from the Charles D. Parsons Family Trust is to be used as part of the non-federal match for the 635-acre acquisition of the Aaron Ledge property in Springfield NH.



Aaron Ledge, Springfield NH

Breakdown of Project Costs and Required Match

Federal USFWS Wildlife Restoration grant will participate in up to 75% of the total project costs. This includes all due diligence expenses.

The State agencies provide at least 25% of the total project costs in **non-federal matching funds**

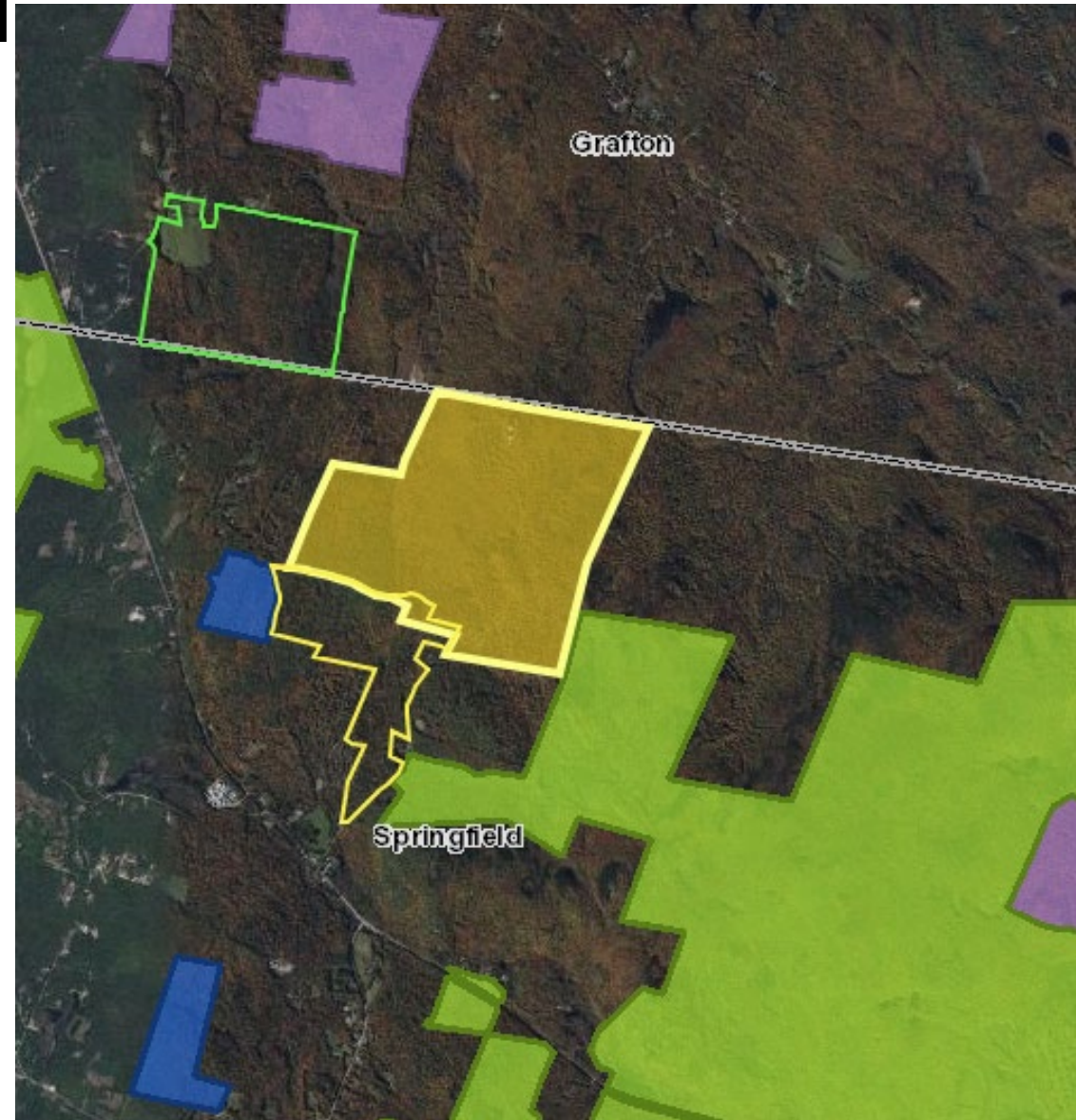
USFWS Wildlife Restoration Grants	\$797,125
Land Value Match (banked)	\$115,709
Cash Donation (Parsons)	\$150,000
Total	\$1,062,834



Aaron Ledge, Springfield NH

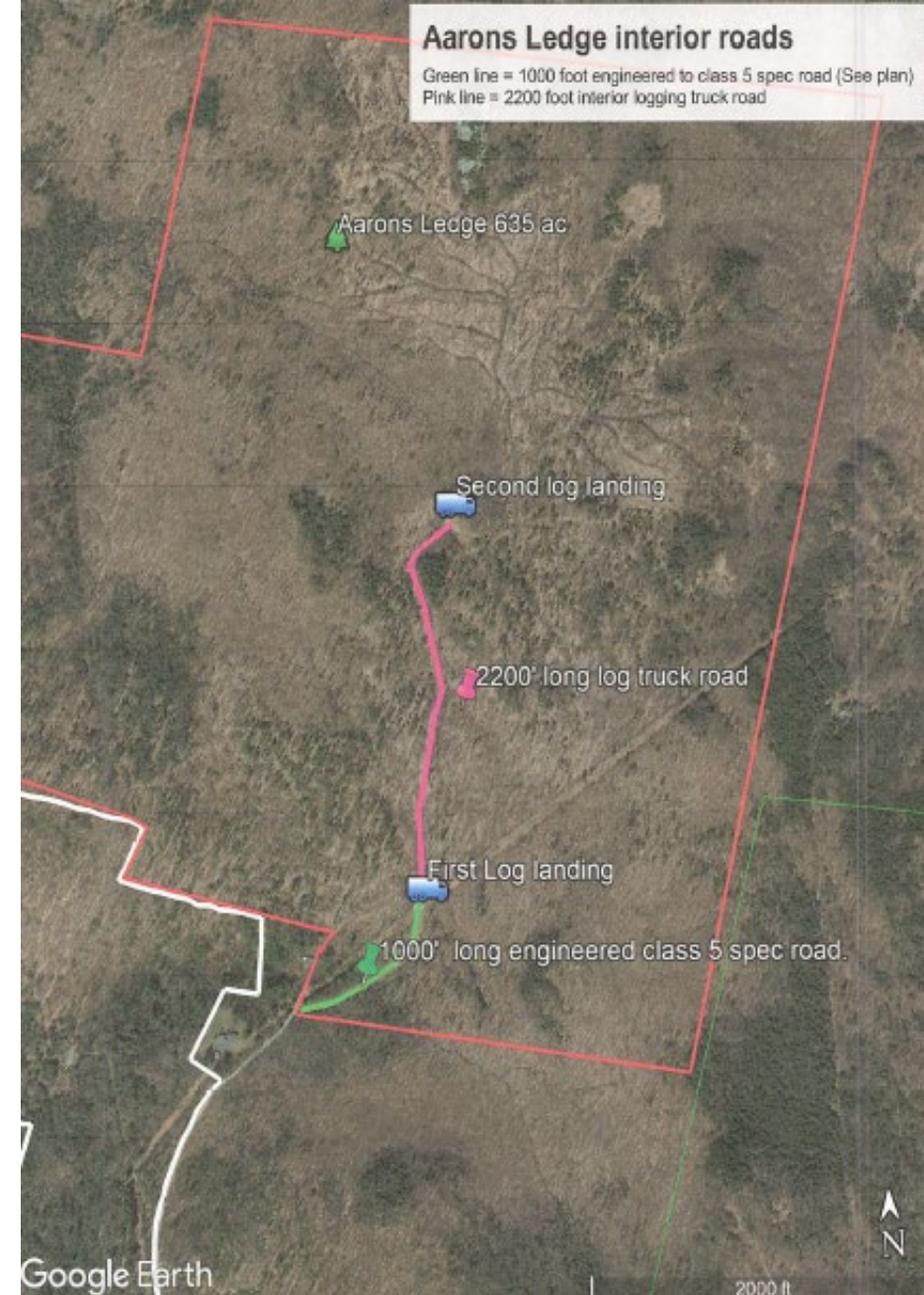
- 635 Acres
- Abuts 6,000+/- acre Gile State Forest
- Very close to:
 - Johnson Farm (289 acres)
 - McDaniel's Marsh (609 acres)
 - Shaw Parcel abutting to the south 185 acres

Private	
Municipal	
State	

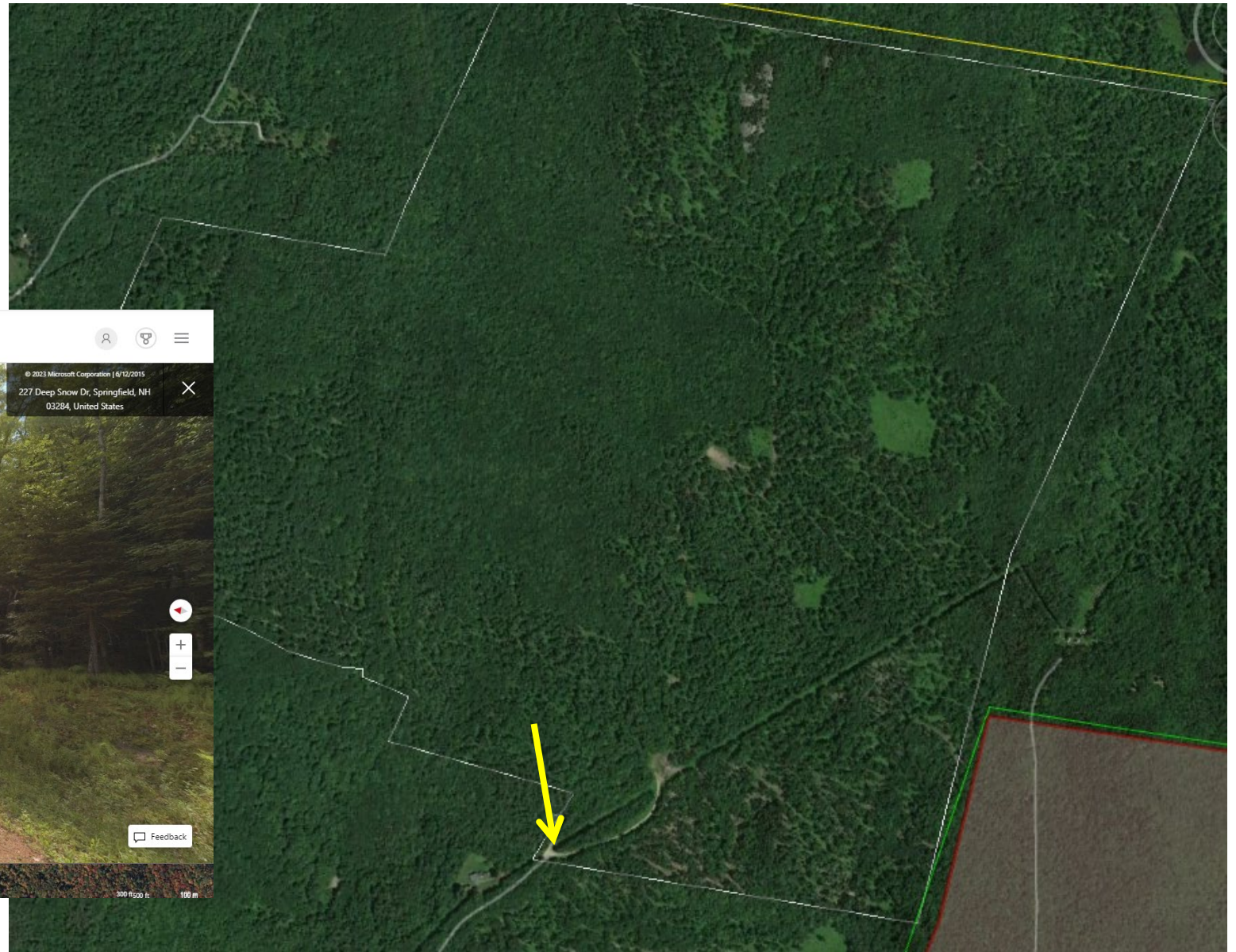
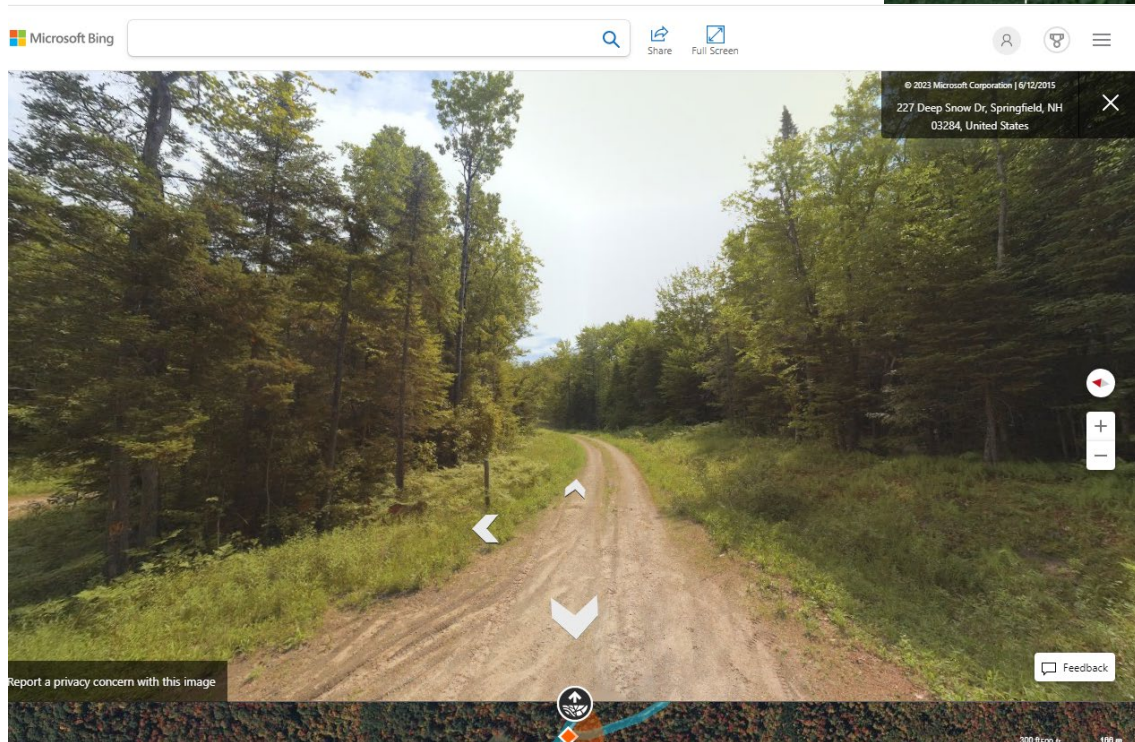


Aaron Ledge Springfield NH

Main access Road and woods
roads into the property.



Aaron Ledge, Springfield NH Access Road w Gate



NEW HAMPSHIRE FISH AND GAME DEPARTMENT
WILDLIFE HABITAT PROGRAM

Your Wildlife Lives Here!

Aaron Ledge, Springfield NH

Access Road w Gate – Feb 2023



NEW HAMPSHIRE FISH AND GAME DEPARTMENT
WILDLIFE HABITAT PROGRAM

Your Wildlife Lives Here!

Aaron Ledge, Springfield NH

First Log Landing





**Aaron Ledge,
Springfield NH**
Access from West Side
Old Gilman Road, Discontinued in 1868

Aaron Ledge, Springfield NH



NEW HAMPSHIRE FISH AND GAME DEPARTMENT
WILDLIFE HABITAT PROGRAM

Your Wildlife Lives Here!



Aaron Ledge, Springfield NH



NEW HAMPSHIRE FISH AND GAME DEPARTMENT
WILDLIFE HABITAT PROGRAM

Your Wildlife Lives Here!

Aaron Ledge, Springfield NH

View from a top Aaron Ledge ~ Dec 2021



NEW HAMPSHIRE FISH AND GAME DEPARTMENT
WILDLIFE HABITAT PROGRAM

Your Wildlife Lives Here!

Respectfully Request ... The acceptance of a cash donation of \$150,000 from the Charles D. Parsons Family Trust, to be used as part of the non-federal match for the acquisition of 635-acre, Springfield NH.

